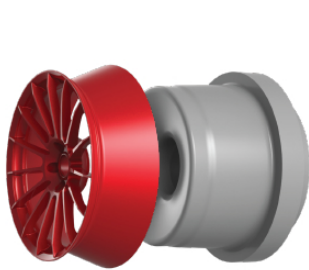


FLOW+
FORM

FLOW+FORM

A forming process where a pressure-cast preform is “stretched” to a specific flow formed profile and thickness.

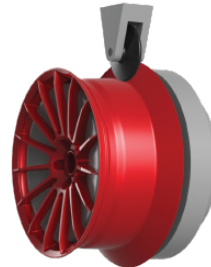
This flow forming improves the grain structure of the aluminum making it stronger, lighter and more precise than a traditional cast wheel resulting in forged aluminum-like strength



Cast blank placed
into FlowForm mold



Roller presses onto blank
and begins to mold wheel



Slowly turning, the wheel
begins to take shape



Nearly finished the wheel
is looking awesome



Finished wheel has forged
aluminum-like strength





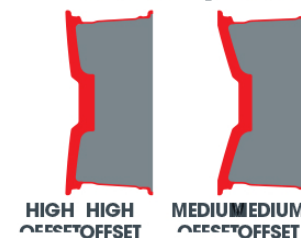
FF01

AVAILABLE SIZES
19 - 20"

WEIGHTS START AT
22lbs

WARRANTY
LIFETIME STRUCTURAL
2-YEAR FINISH

AVAILABLE OFFSET
MEDIUM / HIGH



TÜV
AUSTRIA

VIA

CERTIFICATION
JWL

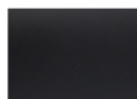


STANDARD COLORS

OPTIONAL COLORS



LIQUID SILVER



TARMAC



ANTHRACITE



FOG



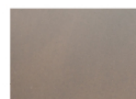
GOLD RUSH



GREAT WHITE



HYPER YELLOW



IPA



LIQUIDBLACK



RACER ORANGE



REDLINE



SKY BLUE



TEQUILA LIME

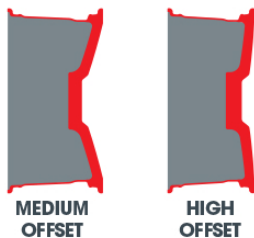
FF15

AVAILABLE SIZES
18 - 20"

WEIGHTS START AT
19lbs

WARRANTY
**LIFETIME STRUCTURAL
2-YEAR FINISH**

AVAILABLE OFFSET
MEDIUM / HIGH



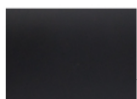
CERTIFICATION
**JWL VIA TÜV
AUSTRIA**



STANDARD COLORS | OPTIONAL COLORS



LIQUID SILVER



TARMAC



ANTHRACITE



FOG



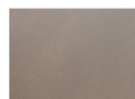
GOLD RUSH



GREAT WHITE



HYPER YELLOW



IPA



LIQUIDBLACK



RACER ORANGE



REDLINE



SKY BLUE



TEQUILA LIME



ATG-RACING GMBH
RUDOLF DIESEL STRAßE 61
48157 MÜNSTER

TEL.: +49 251 1624 5580
FAX.: +49 251 1624 5581

EMAIL.: info@atg-racing.de
WEB.: www.atg-racing.de